

Ullvunga

Distribution Catalog 2019



Ullvuna is a chilean brand founded in 2009 by the designer and author FlorenciaCC. It is focused on pin loom weaving.

FlorenciaCC started selling finished items worldwide through her Etsy store and after her first book "100 pin loom squares" was published she changed her business model and started designing and producing her own weaving tools and patterns.

The aim of Ullvuna is to offer an all-in-one experience of creativity, fun and learning, by providing DIY kits, pin looms, tools, patterns and printables.

All the items included in this catalog are original from Ullvuna. They were all designed by FlorenciaCC and they are produced in the US.

All the items included in this catalog are complemented with step-by-step instructions on basic weaving techniques, patterns, printables and freebies that each customer can easily find and download from www.ullvuna.cl



1. Weaving looms
2. Books

Name: KAYU

Description: One single wooden surface that includes 13 pin loom weaving sizes: 6 squares, 6 triangles and 1 rectangle.

It works to weave on the bias or regular weaving (warp+weft), to make wall tapestries, etc.

Features: Choose the figure you want to weave and then arrange the acrylic pins. It is versatile, easy to use and store. Comfortable to weave (no nails to damage clothing). Easy to use over lap.

Included in the set:

- Kayu wooden board (perfectly sanded and barnished)
- 130 acrylic pins
- printed cotton bag to store
- 3" yarn needle
- printed instructions

Product Size: Square surface 13.5"

Packaging: Cardbox





Name: RELMU

Description: Bulky yarn multi weaving loom. One single wooden frame includes 5 sizes of squares to weave on the bias or as the Zoom Loom/Weave-It, depending on how you arrange the acrylic pins.

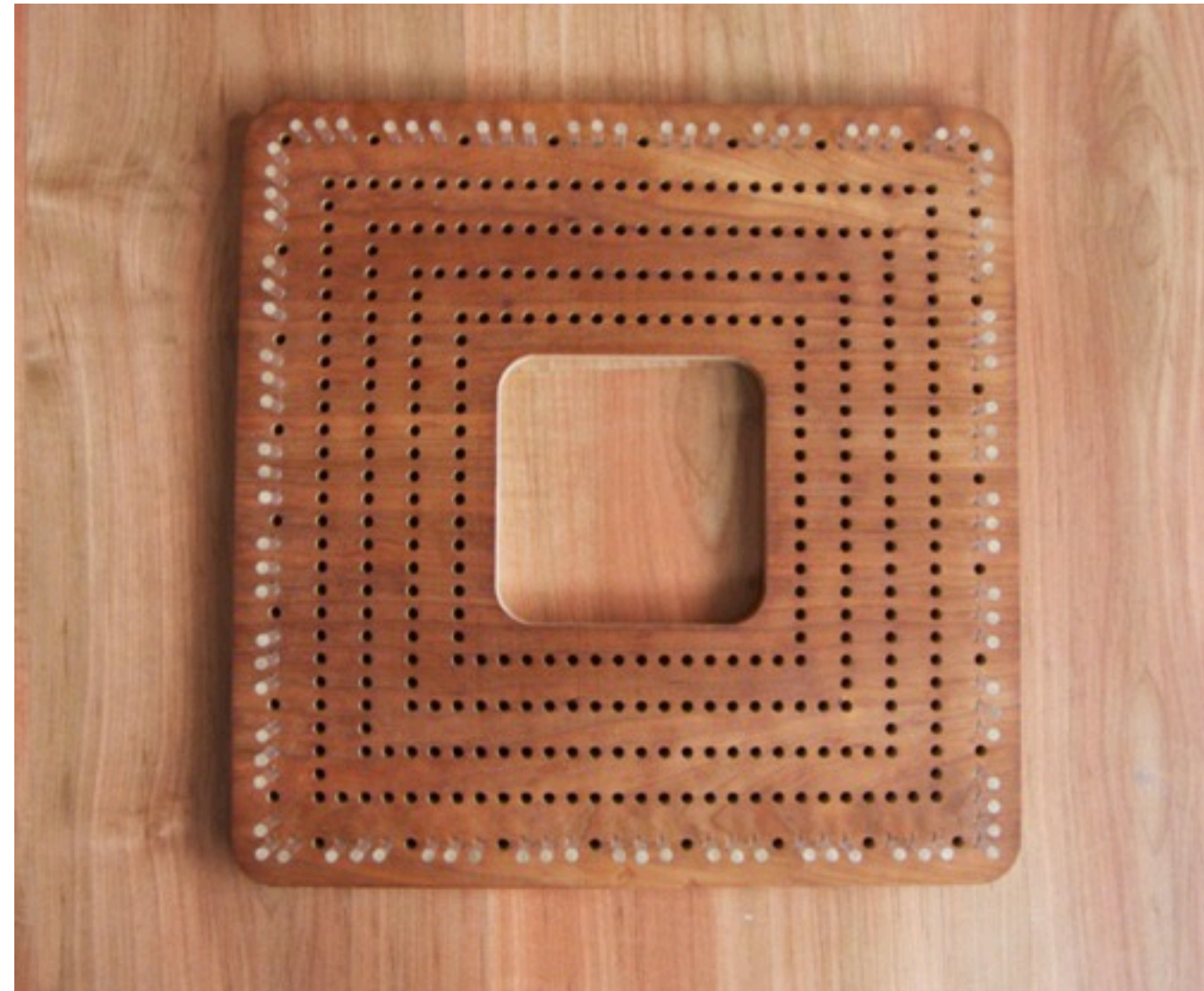
Features: You can reuse Zoom Loom patterns/designs and make them 3 times larger. It is versatile, easy to use and store. Comfortable to weave (no nails that damage clothing).

Included in the set:

- Relmu wooden frame (perfectly sanded and barnished)
- 130 acrylic pins
- printed cotton bag to store
- 3" yarn needle
- printed instructions

Product Size: Square surface 13"

Packaging: Cardbox







RELMU and KAYU printed cotton bag
(included in the sets)



Name: PERFECTCOUPLE

Description: Pocket pin loom set of 2 4x4" weaving frames. One works as the Zoom Loom, the other works on diagonal weaving.

Features: Endless possibilities in one tiny single set. Light, portable and fun. Many pattern collections available at Ullvuna to try on this set.

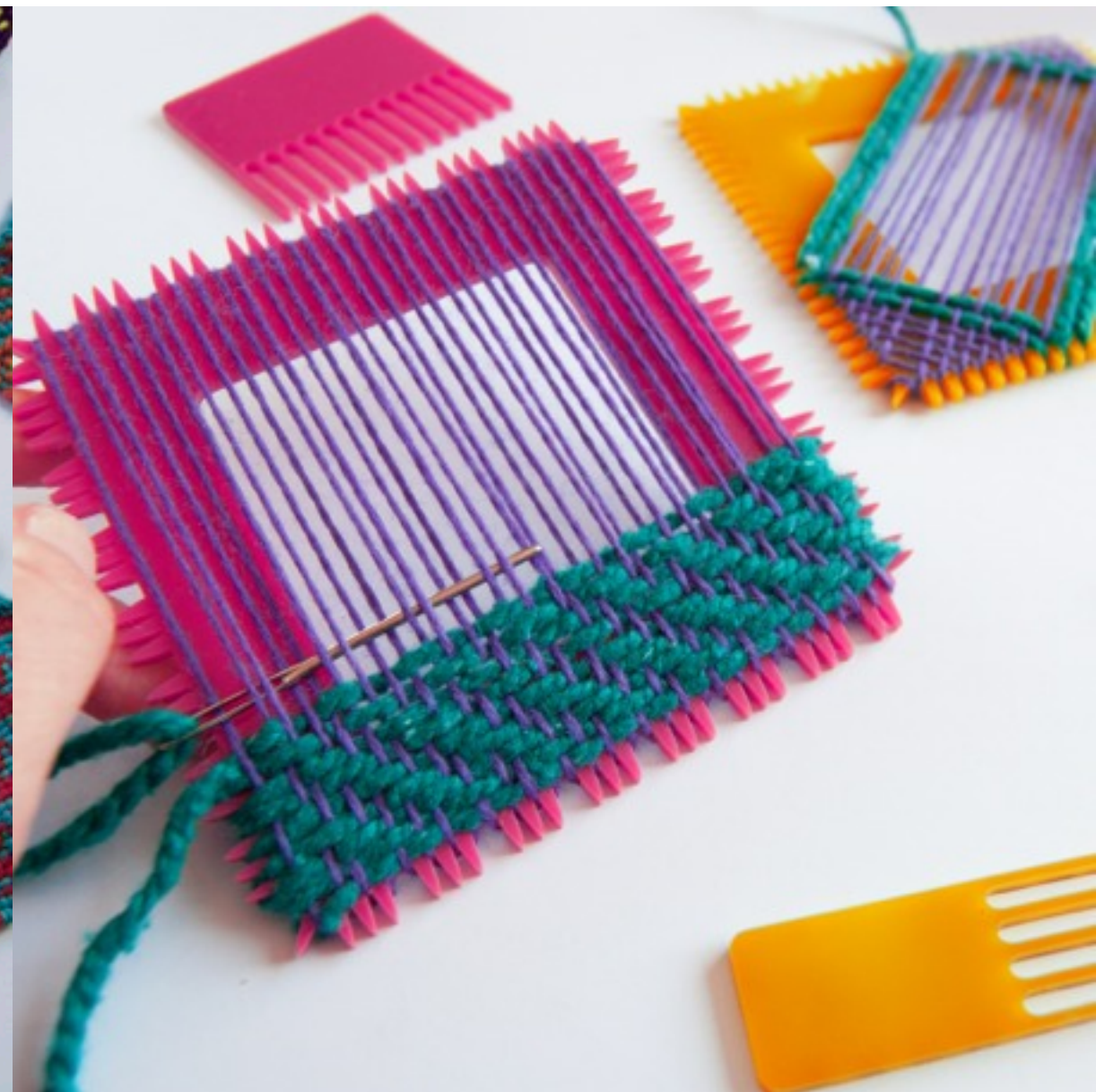
Included in the set:

- 2 4x4" acrylic weaving frames
- 4 acrylic weaving combs
- printed zipper pouch
- 3" yarn needle
- crochet
- printed instructions

Product Size: Square Frames 4"

Packaging: Cardbox





Name: HEXAGONS

Description: Pin loom set of 2 hexagonal weaving frames to weave on the bias or just try your own technique.

Features: Easy to use, take and store, enhances creativity, light, highly enjoyable.

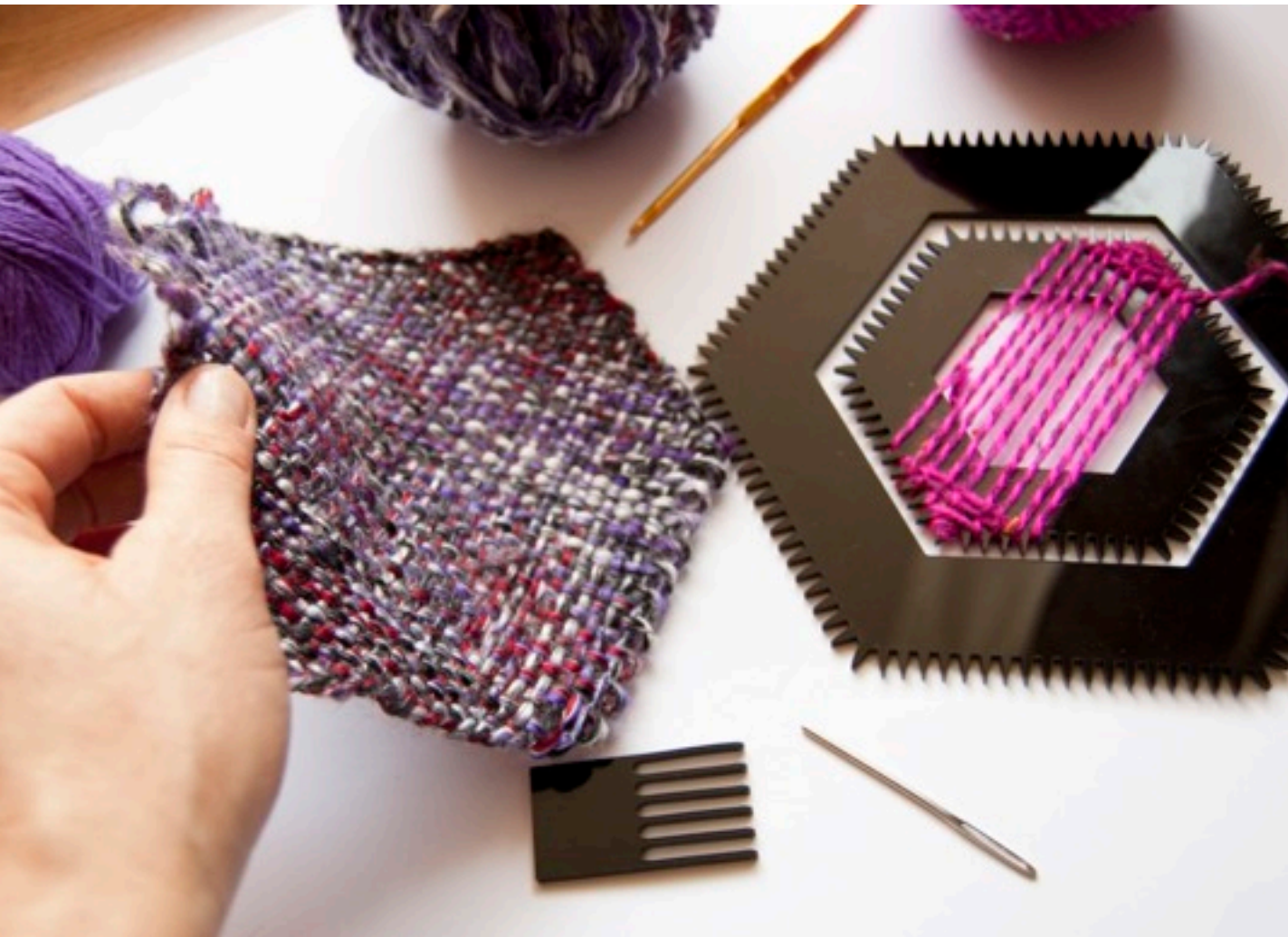
Included in the set:

- 2 acrylic hexagonal weaving frames 7" and 4" (width)
- 1 acrylic weaving comb
- printed zipper pouch
- 3" yarn needle
- crochet
- printed instructions

Product Size: 7.3" width

Packaging: Cardbox







Name: 30 PATTERNS

Description:

Gathers a collection of 30 patterns for 4x4" pin looms (Zoom Loom, Weave-it or Relmu) designed by FlorenciaCC during 2018.

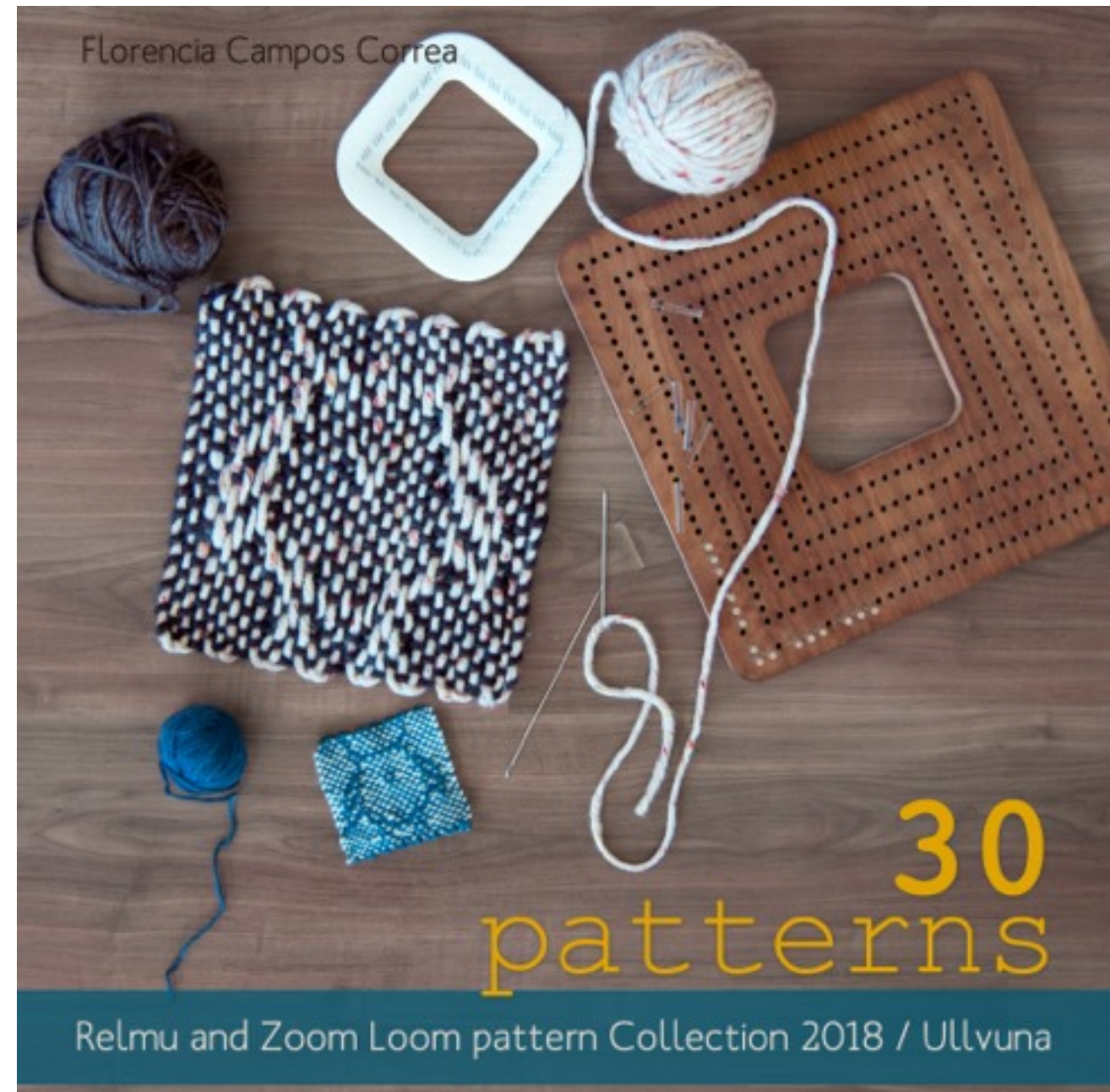
Content: Includes step-by-step instructions on how to weave, tips and suggests color combinations to try. Pattern collections included: Nordic Folk, Tea Party, Woodland, Boho Spirit plus single extra patterns.

Features:

- 51 pages square format 8.5"
- full color premium paper
- coil bound binding
- printed on demand in the US

Language: English / Spanish

Release date: Published

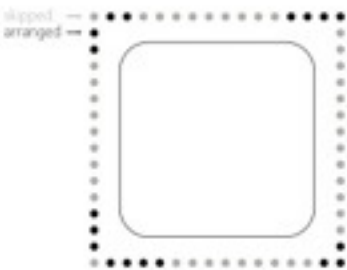




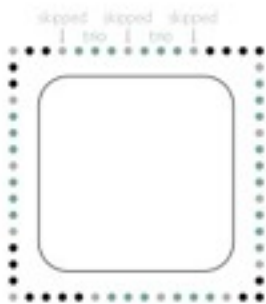
30 PATTERNS



2. Arrange only the pins shown below (black circles). We are using the smaller size of square as example, but these instructions work for all sizes.



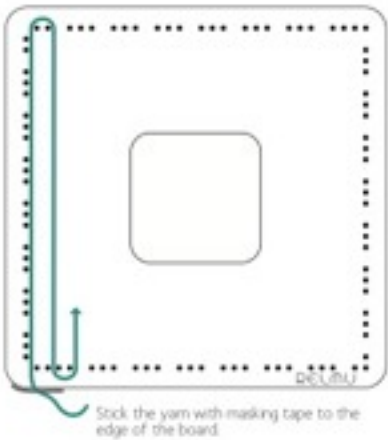
3. To arrange the pending pins, follow this rule: fill holes with trios of pins, skipping one hole between trios. Trios are shown in turquoise.



Once you have arranged all pins, follow the instructions to start weaving.

TWO-LAYER WARP IN THE RELMU

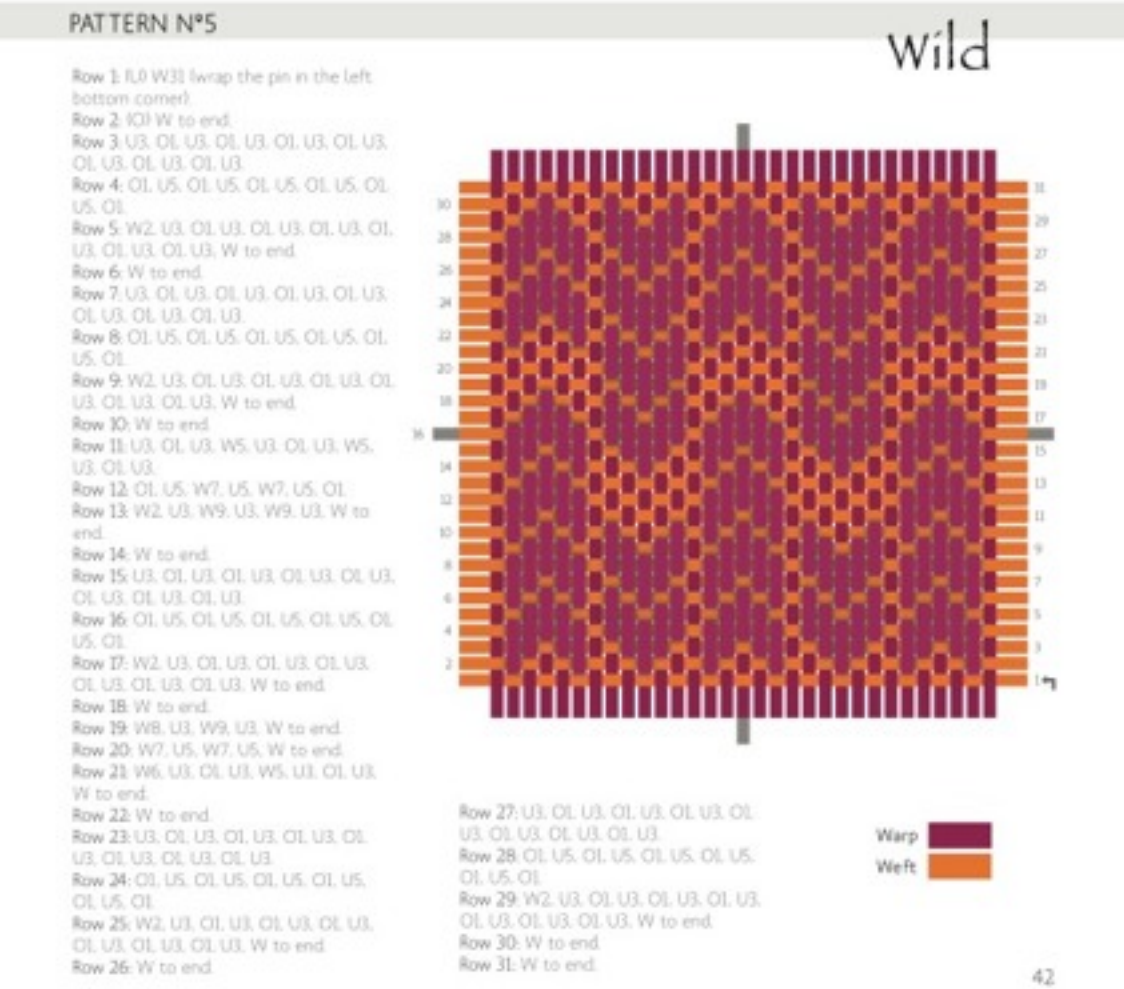
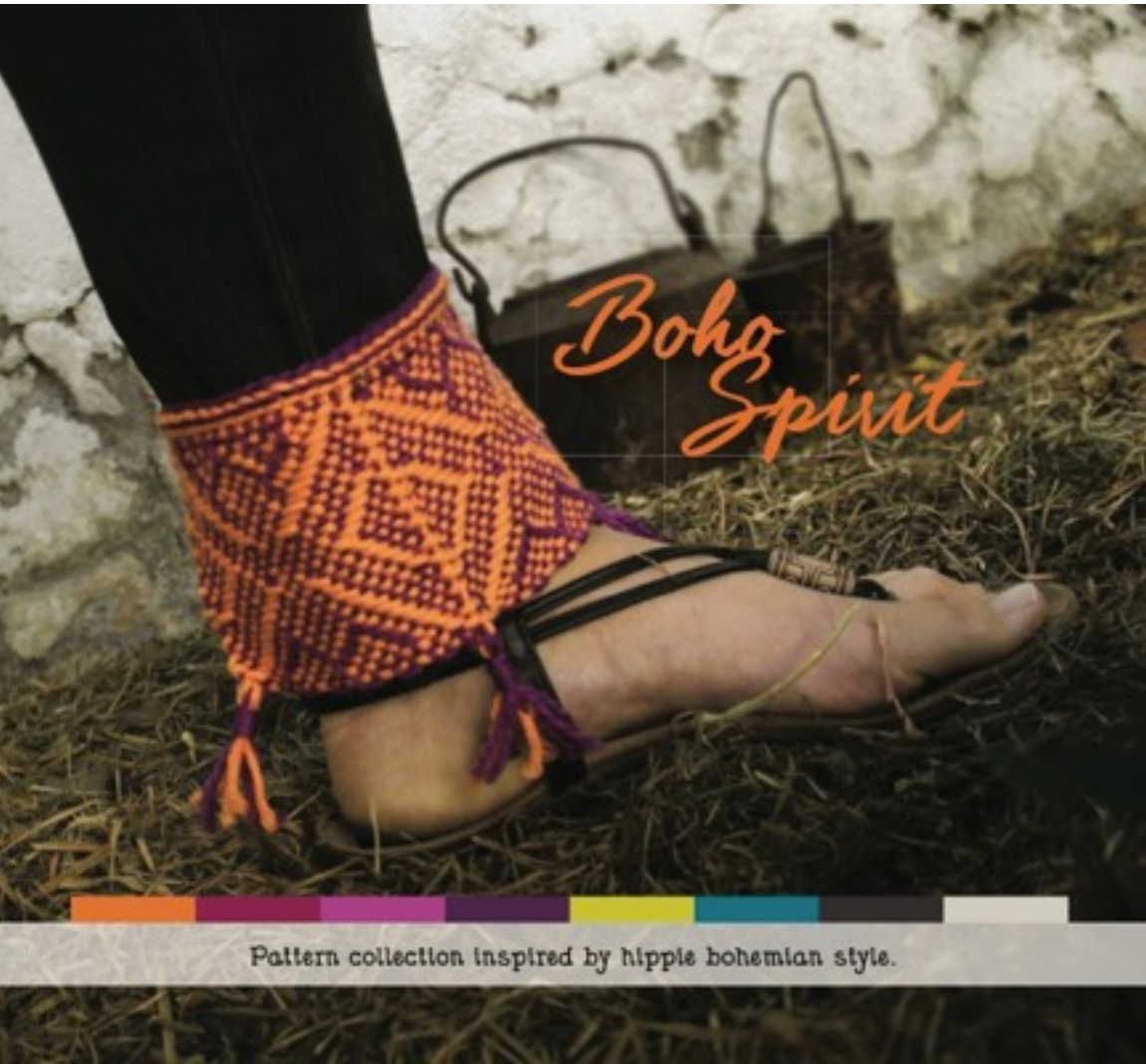
1. To start the first warp layer, place the loom as shown. Leave a 6" (15 cm) tail and stick the yarn to the edge. Pull up the yarn, wrapping the first two left side pins in the upper row, then go down and wrap (from left to right) the last two pins of the group of four pins.



Repeat the process wrapping the last two pins of each trio of pins from left to right, until you reach the pins in the lower right corner.



30 PATTERNS





Name: 10 BABY PROJECTS TO TRY IN 1 SQUARE LOOM

Description: Gathers a collection of 10 baby top patterns to try in 12x12" pin looms (Kayu or other) designed by FlorenciaCC since 2009.

Content: Includes step-by-step instructions on how to do continuous strand weaving, how to make your own frame loom, tips and suggests color combinations to try.

Features:

- 50 pages square format 6x9"
- full color premium paper
- coil bound binding
- printed on demand in the US

Language: English / Spanish

Release date: August 1st 2019







For dealer prices or further information, please:

Contact us florencia.campos@ullvuna.cl

Follow us on Instagram or FB [@ullvuna](#)

www.ullvuna.cl